



Date: 10th, DEC 2014 (WED)

To: The worldwide International partners

Kind Attn: Beverage production business

Subject: 1000Liter/hour fresh fruit juice production line.

Offer of the
Pure Water and Fresh Fruit Juice Production Plant
Including PET Bottle blowing system

- Plant Capacity: 1000Liter/hour Juice or mineral Water production.
- Main System of Plant:
 1. Pure Water Completed Plant
 2. Fresh Fruit Juice Production System Completed Plant
 3. Pet Bottle Blowing System Completed Plant
 4. Filling System Full completed
 5. Capping machine
 6. Label Printing SystemAbove Number 1 to 6 is automatic operational plant
- 7. Semi Auto Packing system

8. Factory Housing and build up construction

9. Power Generator and full cable connection

Plant Cost of Details

No	Section	Equipment and System Name	Specification	Quantity	Cost/USD
1	Fresh Fruit Raw Material extraction	Surfing type fruit washing system	1,000kg/hour	1	13,800
		Fruit cracking and juicing equipment	1,000kg/hour	1	10,200
		Fruit pulping system equipment 2ch	1,000kg/hour	1	17,500
		Anti heat juice pump	WB70/075	1	450
		Double Filtration system (IT)	2 stage	1	1,200
		Sub Total			
2					
1)	Concentrated juice jam or powder as law material and pure juice production. (included raw water pump, quartz sand filter, active carbon filter, sodium-Ion exchanger, multi-phase pump, precision filter, micro filter, reverse osmosis system, conductivity motor, dosing, high pressure pump, valves, connectors and pipe with fittings)	Pure water treatment plant	1,000Ltr/hour	1	18,000
2)		Aseptic water tank (IT)	SUS 306	1	1,800
3)		Spring Conveying pump	Q=2m ³ /h	1	550
4)		Sugar syrup melting tank	300L	1	1,850
5)		Anti heating pump	WB70/075	3	450
6)		Syrup Filter	300kg/h	1	900
7)		Juice lending tank (IT)	SUS 306	2	4,800
8)		Double filtering system (IT)	2 stage	1	2,300
9)		Middle storage tank (IT)	SUS 306	1	1,800
10)		Homogenizer (IT)		1	5,800
11)		Juice Buffer tank (IT)	SUS 306	1	1,800
12)		Vacuum deaerator (IT)		1	6,800
13)		Juice heat reservation tank	SUS 306	1	5,500
14)		UHT pasteurizer		1	8,300
15)		High position double layer tank	SUS 306	1	5,200
16)		CIP cleaning machine for clean pipe	Double stage	1	9,600
17)		Auto Washing filling capping system		1	18,600

18)		Conveyor(4m),motor, inspection lighting system		1	3,940
19)		Label steam shrinking machine	High quality	1	5,800
20)		Date cord Printer	High quality	1	2,600
21)		PE film shrink packing equipment			9,500
22)		PLC, Valve fitting and electronic control system with parts		1	18,700
		Sub Total			134,590

3	Field service	Installation, training, Test service			
1)	(Training from Local operator lean from Installation, commissioning test)	Air ticket and full accommodation including Asian type Food supply and transport.	Buyer support		
2)		2 engineer x 30days Manpower fee	60	300	18,000
3)		.Sub Total			18,000
4	Factory Building Cost	Turn Key Supply			
1)	Factory Material	Colored Steel panel 0.3T and Politech Roof and Steel Channel frames.	350 M ²	103	36,050
2)	Factory Installation	3 Persons x 45day	135	285	38,475
3)	Factory Land and Foundation,	From Buyer Scope (Cement concrete work and Utility source for machine)			
		Sub Total			74,525
5	Brand information	Control system			

		<p>Main electrical equipment brand</p> <ol style="list-style-type: none"> 1. RO membrane Brand: HYDECANME Place of origin: USA 2. Pump brand: South Brand. Pump field No.1 in China. 3. PLC brand: Mitsubishi Place of origin: Japan 4. Touch screen (MMI) Brand: Mitsubishi Place of origin: Japan 5. Transducer Brand: Mitsubishi Place of origin: Japan 6. Contactor Brand: Schneider Place of origin: Taiwan 7. Thermal Relay Brand: Schneider Place of origin: Taiwan 8. Screen monitor/PLC: SIEMENS 9. Pneumatic Component: Schneider 10. Contactor Brand: Schneider 11. Photo-switch: OMRON 12. Pneumatic Component Brand: AirTAC Place of origin: Taiwan 		
6	Conditions			
1)	Delivery	50days from Reaching Advance paid for FOB from port		
2)	Payment	50% Advance. After balance 50% L/C of Bill of lading		
3)	Packing	Wooden Box		
4)	Warranty	One year from commissioning test		
5)	Quotation Limit	7days from date of issue		
6)	Destination	CIF port of buyers country (Custom tax cleaning, local transport by buyer condition		
		Total Quotation Cost		270,265.-

<http://www.procongroup.org/juice-fac.htm>

Profitable estimation

1. Business to support to local peoples: Minimum production daily 8 Ton (8,000 litter) pure water or Fruit juice.
2. After marketing gross income will US\$8,000 per day. (60% deduct for the material cost with expenses from gross income).
3. Net income profit wills US\$3,200 per day. Minimum operation dayshift 8 hours based. $3,200 \times 26\text{day} = \text{US\$}83,200$ per monthly.
4. Manpower fee of production factory staffs; 10 persons is US\$30,000.
5. Therefore, Net profitable estimation is US\$53,200 (83,200-30,000) per monthly
6. Yearly income estimation is US\$638,400. Full Tax with Loss factor together 30% reduce than net profit is US\$446,880.- Net profit.
7. Profit share 50% from US\$446,880 is US\$223,440, this amount can support over the 700 poor people's food and medication a monthly. (Each US\$300 per person)

Contact Information of Plant supply:

Phone Call:

(English) +82 42 52 46 945. +82 70 77 15 78 62

(French, Greek) +357 9621 3916

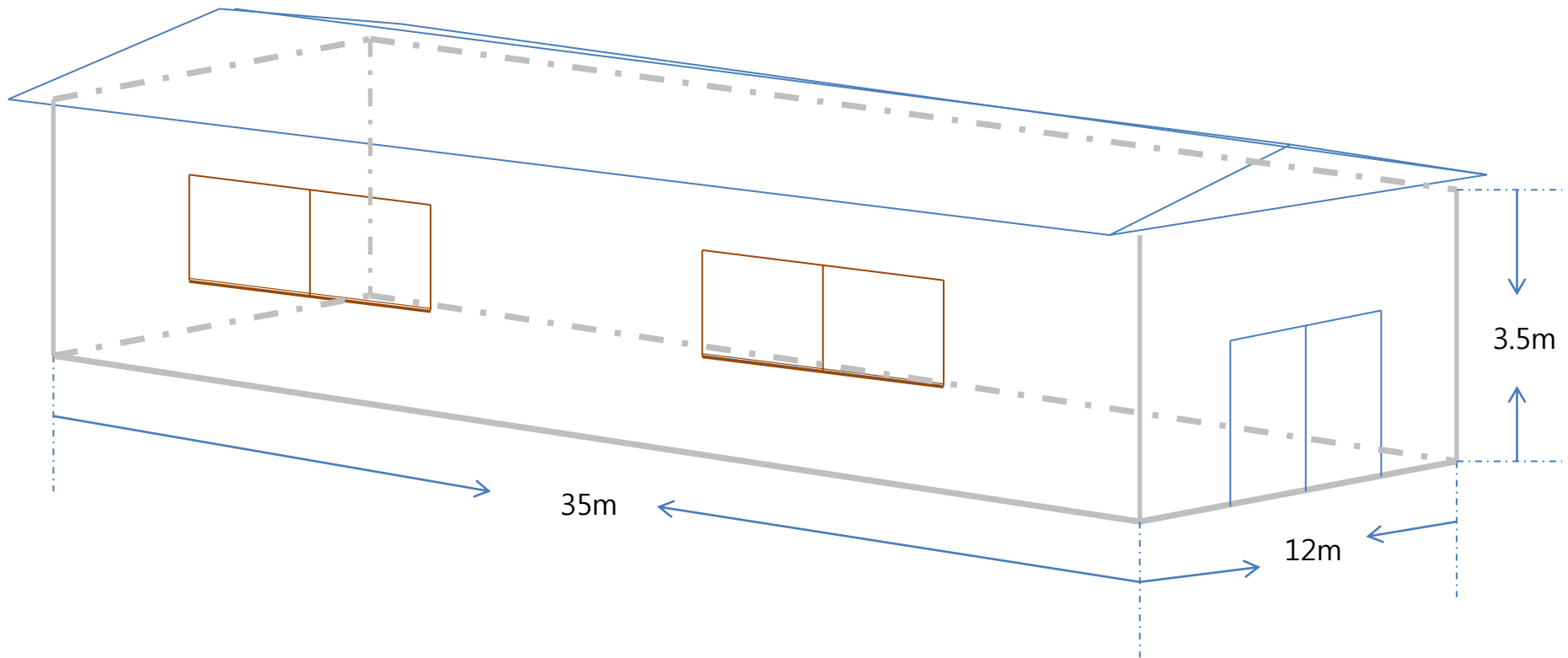
e-mail:

prowide@prowide.com

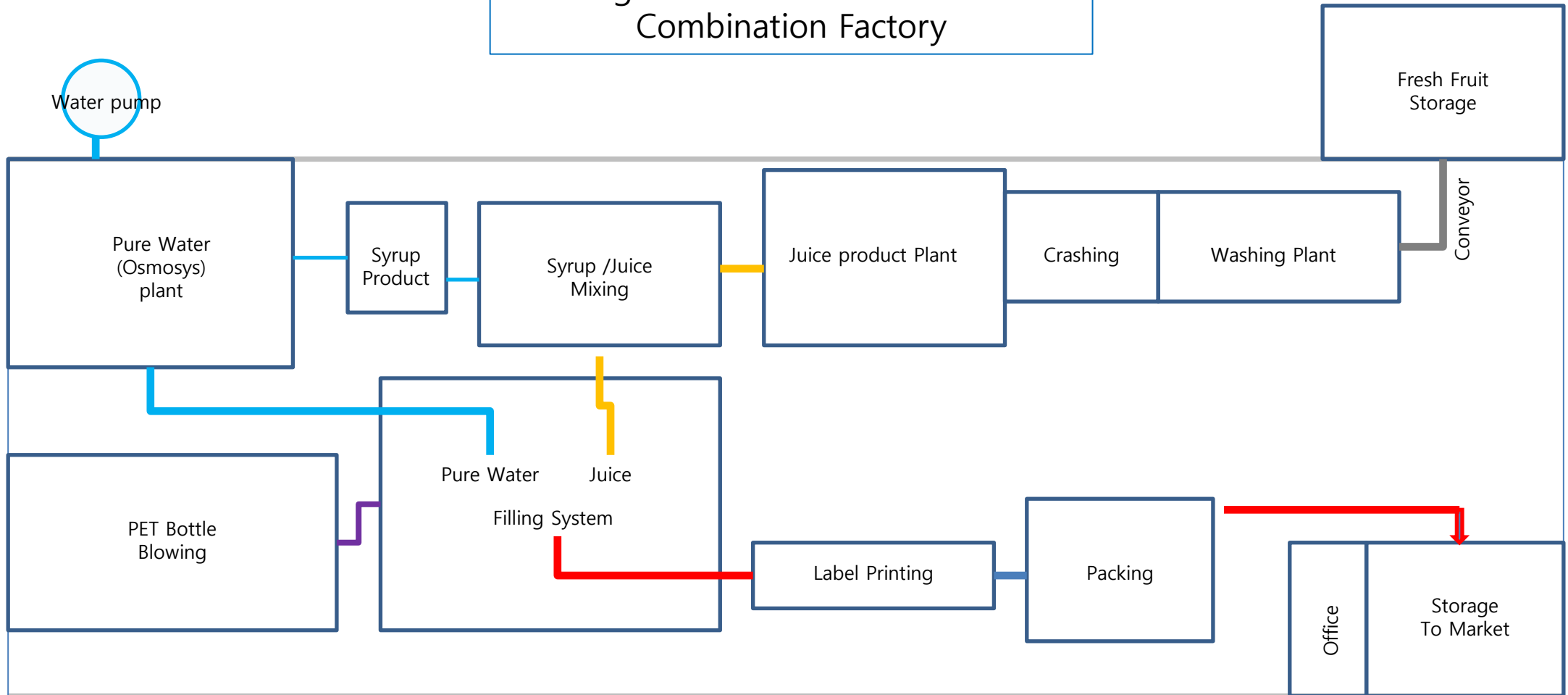
chairmanlee@hotmail.com

Skype: procon-group-inc

Lay out of
Beverage Production and Pure Water
Combination Factory



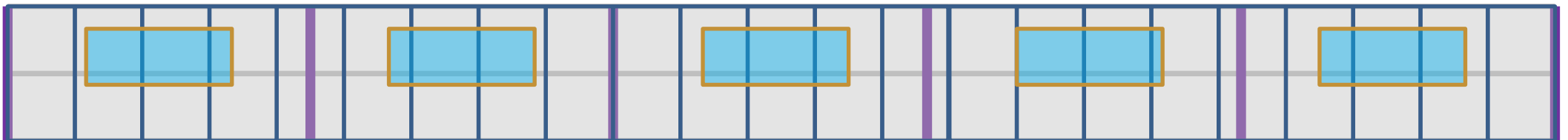
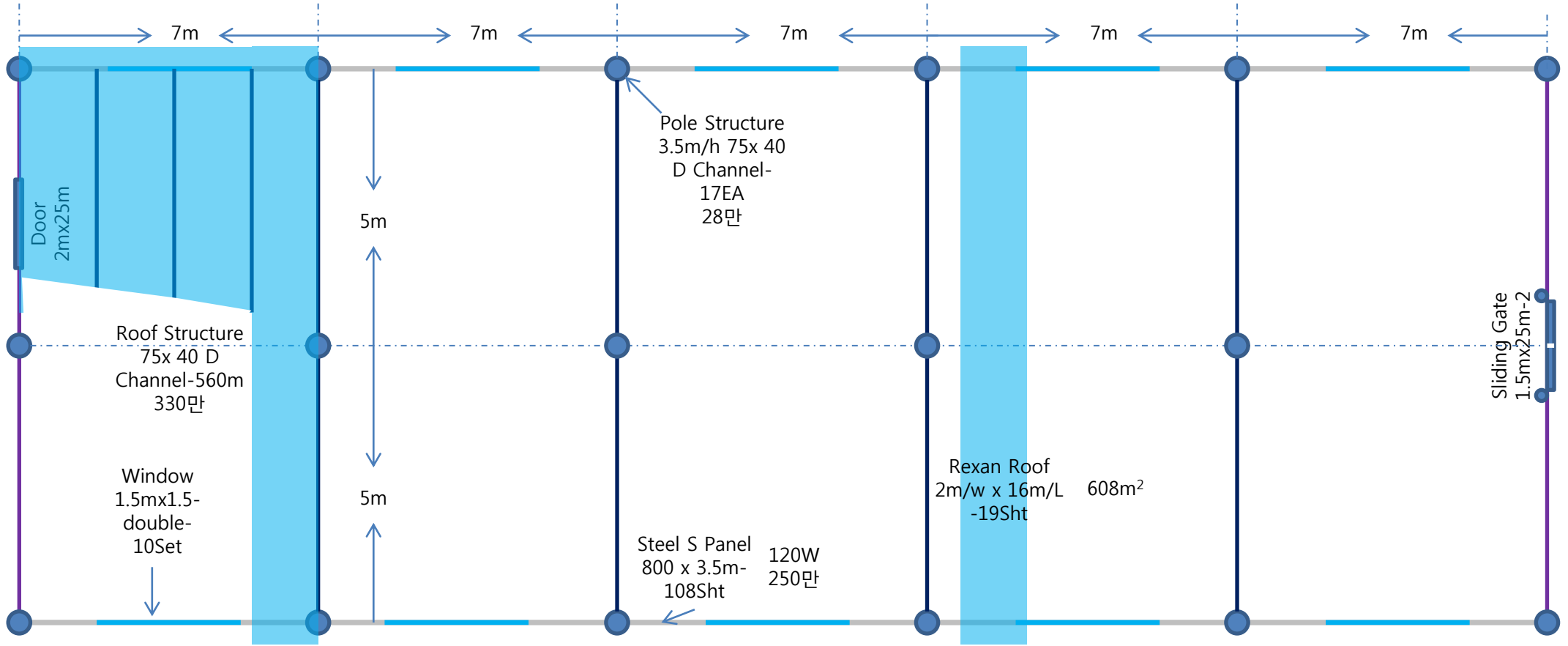
Lay out of Beverage Production and Pure Water Combination Factory



1. Under Ground Water Drilling: 10m ~ 50m x 4"Φ Discharge 2" Φ
2. Electricity Power 80Kwh x 220~240V grid line connect or diesel Generator set up
3. Fire Fighting tool or system set up
4. Material storage and refrigeration system for cool store of Fresh fruit and produced Juice
5. Housing Material request information from Sheet #3
6. Electricity Cable and Junction Box with Consents
7. Electricity Cable and Utility tray
8. Painting on Broad



Lay out of Beverage Production and Pure Water Combination Factory



Lay out of Beverage Production and Pure Water Combination Factory

