



BUSINESS PLAN FOR FREE ENERGY PROJECT

1. PROJECT NAME: PROCON ENERGY

The Technology: This technology is eliminates the fear of fuel depletion afraid the world people's, This can be used for all aspects of human life by producing pollution-free energy.

Technology that can power and electricity without any need of underground resources such as fossil fuel, water, wind and sunlight.

This Technology will Nature conservation's special technology that also cleans the air and takes responsibility for human health as well.

2. PROJECT PARTNERS:

- 1) Procon International Ltd (Technology and construction)
- 2) Procon Foreign Partner (Financial and Shared JV)

3. LOCATION:

1) Korea main production base: The project address is Sambong-gil, Sukmun-myeon, Dangjin-si, Chungcheongnam-do, 31706, Republic of Korea. This place can be access to expressway only 450m distance and Shipping port Harbo is less of 1Km distance. That expressway can connectivity to full of express high way to Full of Region Korea. (can be change the place)

2) Overseas Branch production base: Larnaca or Paphos in Cyprus.

4. PROJECT LAND WIDES: 33,000m² / (10,000PY)



5. PROJECTED DESCRIPTIONS: The project is production factory and Technology Center Construction. And parts Fabrication equipment and assembling system set up and parking with Storage buildup.

6. PROJECT CONCEPTS

1) Number of Schedule

- a) Pre-table meeting for project.
- b) Technology Inspection and Project survey for trusty.
- c) Agreement of Joint Venture and Investment.
- d) Land Buy for Equity Funding.
- e) Fence wall construction.
- f) Project license application.
- g) Final design for building and system.
- h) Temporary facilities set up and material warehouse build.
- i) Electricity, Water source connection.
- j) Factory and Technology Center construction.
- k) Equipment purchase.
- l) Equipment election and production system set up.
- m) Electrical instrument set up.
- n) Furniture and office set up
- o) Security system set up.
- p) Registration approval from Ministry for business.
- q) Business Operation.

2) Condition of Overseas plant:

- Factory Building material supply by Procon.



- Full equipment supply by from Procon.
- Construction managing by Procon.
- Financial Control by Investor.
- Full license apply by Investor
- Full technology managing by Procon

3) System and Facilities in the Factory:

The system is law material input to produce parts and assemble then quality test and restore to standby for shipping.

The Facilities list is:

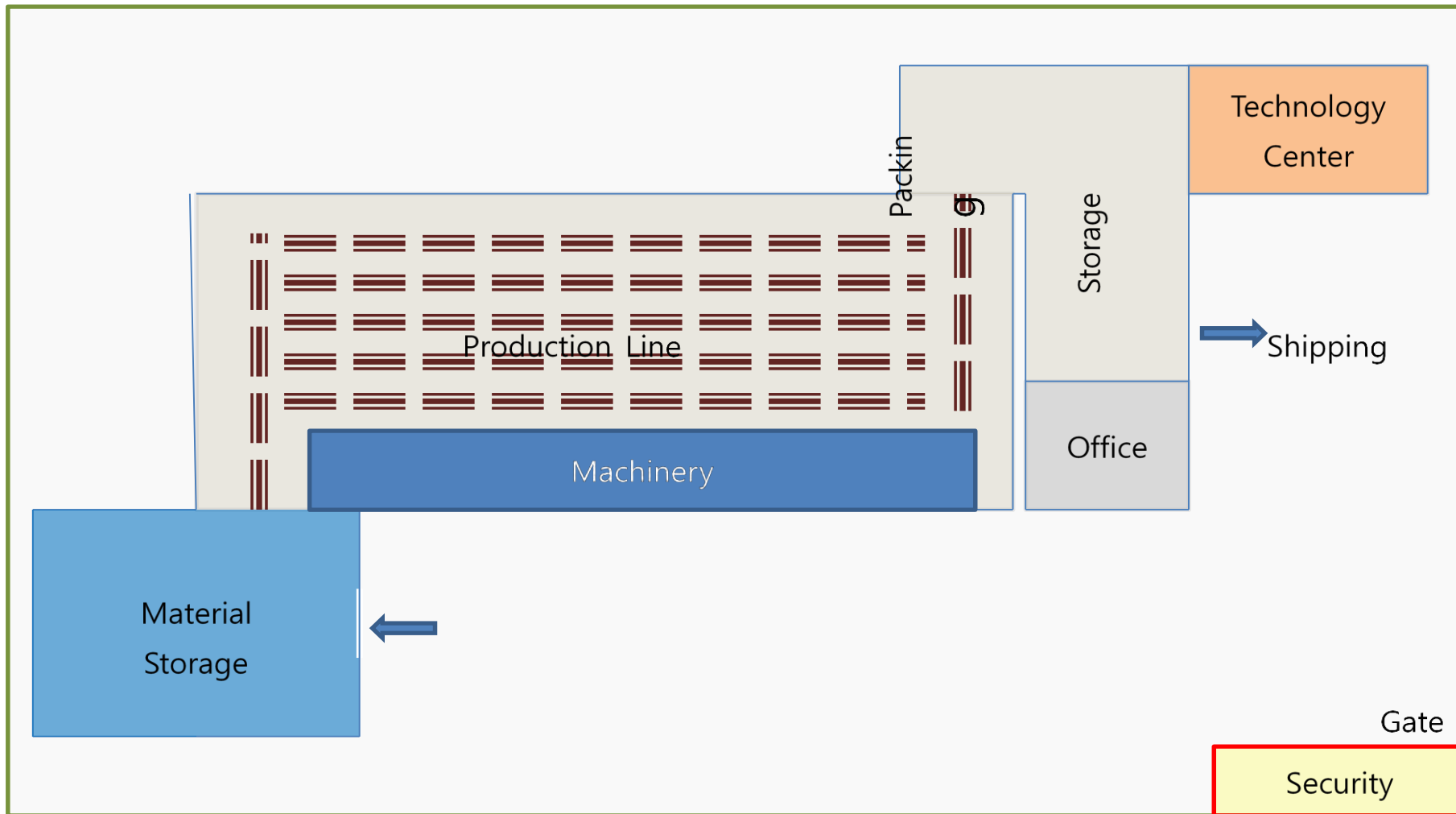
No	Descriptions	Specification	Unit	Quantity
1	Property			
	Project Land	Industrial zone	M ²	16,500
2	Asset of Properties			
2-1	Law material Storage	Concrete block	M ²	990
2-2	Production and Assembling	Concrete block	M ²	3,300
2-3	Parking and Storage	Concrete block	M ²	990
2-4	Technology Center	Concrete block	M ²	330
2-5	Office	Concrete block	M ²	198
	Sub-Total		M ²	5,808
3	Sub Facilities			
3-1	Electricity Gear		Unit	1
3-2	Water system		Unit	1
3-3	Gas	Tank type	Unit	1



3-4	Air System	Include Compressor	Unit	1
3-5	Security System		Unit	1
3-6	Fire Protection system		Unit	1

No	Descriptions	Specification	Unit	Quantity
4	Equipment			
4-1	CNC Lathe (Full Auto)	Computer system	Unit	2
4-2	Lathe	2m bed length	Unit	2
4-3	CNC Milling (Full Auto)	Computer system	Unit	4
4-4	Grinding machine	2m Length	Unit	3
4-5	Planer	4m Bed Length	Unit	2
4-6	Radial Drill machine	2" bore bite	Unit	2
4-7	Table Drill	1"	Unit	2
4-8	CNC Turning Machine		Unit	2
4-9	Cleaning System		Unit	2
4-10	Vehicle (Cargo Truck)	2.5 ton	Unit	3
4-11	Vehicle (Sedan for passenger)	For Director	Unit	4
5	Assembling System			
5-1	Roller Conveyor 3 line	1m wide	M	150
5-2	Air Impact system		system	1
5-3	Lording Panels for Conveyor	Plastic (1m x 1.5m)	EA	200
5-4	Tool Kit (Manual and Auto)	Box, Spanner, air Wrench	Set	30
5-5	Packing Machine		Unit	2
5-6	Fork Lift	For Loading Unloading	Unit	1

Layout of Factory





Procon International Group Korea Co.,Ltd

프로콘 인터내셔널 그룹 코리아 주식회사

F2, (Beon Dong) 62-1, Dosan-Ro, Seo Gu, Dae Jeon, 35320 Korea, Tel: +8270-7715-7862. Fax: +8242-524-6945. e-mail: prowide@prowide.com. www.procongroup.org. www.prowide.com

Factory Building Plan





No	Description	Unit	Length	wide	Line	Total	Total PY
1	Law material Storage	M ²	33	15	2	990	300
2	Production and Assembling	M ²	44	15	5	3,300	1,000
3	Parking and Storage	M ²	33	15	2	990	300
4	Technology Center	M ²	22	15	1	330	100
5	Office	M ²	13.2	15	1	198	60
	Total	M ²				5,808	1,760

7. INVESTMENT COST ESTIMATION OF THE PROJECT

US\$

No	Descriptions	Specification	Unit	Q'ty	Price	Cost
1	Property					
	Project Land	Industrial zone	M ²	16,500	750	12,375,000
2	Asset					
2-1	Law material Storage	Concrete block	M ²	990	1,560	1,544,400
2-2	Production and Assembling	Concrete block	M ²	3,300	1,820	6,006,000
2-3	Parking and Storage	Concrete block	M ²	990	1,560	1,544,400
2-4	Technology Center	Concrete block	M ²	330	2,300	759,000
2-5	Office	Concrete block	M ²	198	1,820	360,360
	Sub-Total		M ²	5,808		10,214,160
3	Sub Facilities					
3-1	Electricity Gear		Unit	1	22,300	22,300
3-2	Water system		Unit	1	7,500	7,500
3-3	Gas	Tank type	Unit	1	5,200	5,200
3-4	Air System	Include Compressor	Unit	1	38,000	38,000
3-5	Security System		Unit	1	25,000	25,000
3-6	Fire Protection system		Unit	1	45,000	45,000
	Sub-Total					143,000



4	Equipment					
4-1	CNC Lathe (Full Auto)	Computer system	Unit	2	58,000	116,000
4-2	Lathe	2m bed length	Unit	2	18,000	36,000
4-3	CNC Milling (Full Auto)	Computer system	Unit	4	64,500	258,000
4-4	Grinding machine	2m Length	Unit	3	32,000	96,000
4-5	Planer	4m Bed Length	Unit	2	47,000	94,000
4-6	Radial Drill machine	2" bore bite	Unit	2	5,300	10,600
4-7	Table Drill	1"	Unit	2	960	1,920
4-8	CNC Turning Machine		Unit	2	58,000	116,000
4-9	Cleaning System		Unit	2	7,600	15,200
4-10	Vehicle (Cargo Truck)	2.5 ton	Unit	3	31,500	94,500
4-11	Vehicle (Sedan for passenger)	For Director	Unit	4	35,000	140,000
						978,220
5	Assembling System					
5-1	Roller Conveyor 3 line	1m wide	M	150	2,370	355,500
5-2	Air Impact system		system	1	32,000	32,000
5-3	Lording Panels for Conveyor	Plastic (1m x 1.5m)	EA	200	210	42,000
5-4	Tool Kit (Manual and Auto)	Box, Spanner, air Wrench	Set	30	550	16,500
5-5	Packing Machine		Unit	2	8,600	17,200



Procon International Group Korea Co.,Ltd

프로콘 인터내셔널 그룹 코리아 주식회사

F2, (Beon Dong) 62-1, Dosan-Ro, Seo Gu, Dae Jeon, 35320 Korea, Tel: +8270-7715-7862. Fax: +8242-524-6945. e-mail: prowide@prowide.com. www.procongroup.org. www.prowide.com

5-6	Fork Lift	For Loading Unloading	Unit	1	53,000	53,000
	Sub-Total					516,200
6	Expenses	License/Design	L/S	1	1	420,000
7	Management Manpower	8 persons x 24 M'th	M/M	192	4,600	883,200
	Grand Total					25,529,780

8. PROJECT LOCATION OF KOREA PLANT





Procon International Group Korea Co.,Ltd

프로콘 인터내셔널 그룹 코리아 주식회사

F2, (Beon Dong) 62-1, Dosan-Ro, Seo Gu, Dae Jeon, 35320 Korea, Tel: +8270-7715-7862. Fax: +8242-524-6945. e-mail: prowide@prowide.com. www.procongroup.org. www.prowide.com

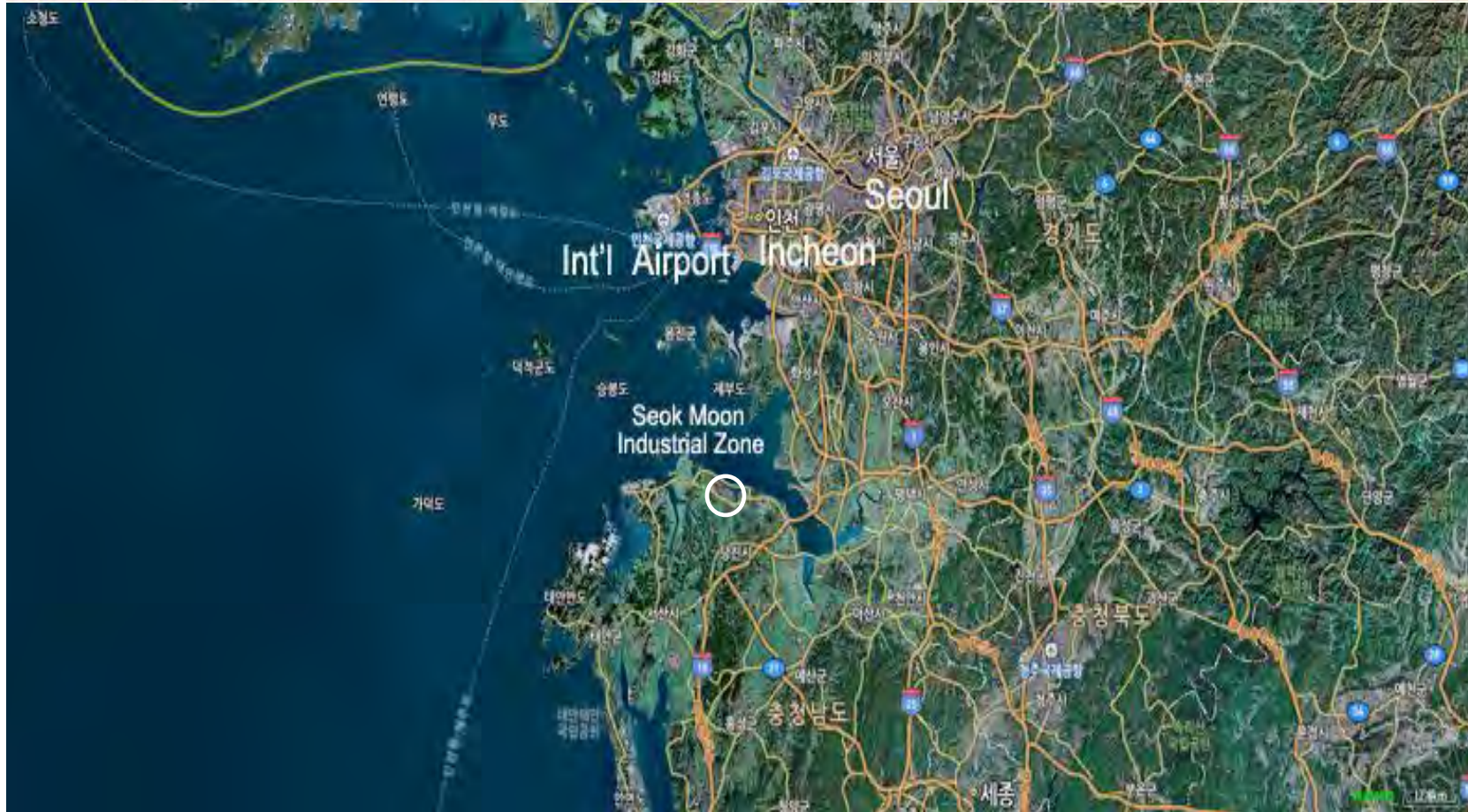




Procon International Group Korea Co.,Ltd

프로콘 인터내셔널 그룹 코리아 주식회사

F2, (Beon Dong) 62-1, Dosan-Ro, Seo Gu, Dae Jeon, 35320 Korea, Tel: +8270-7715-7862. Fax: +8242-524-6945. e-mail: prowide@prowide.com. www.procongroup.org. www.prowide.com





Procon International Group Korea Co.,Ltd

프로콘 인터내셔널 그룹 코리아 주식회사

F2, (Beon Dong) 62-1, Dosan-Ro, Seo Gu, Dae Jeon, 35320 Korea, Tel: +8270-7715-7862. Fax: +8242-524-6945. e-mail: prowide@prowide.com. www.procongroup.org. www.prowide.com

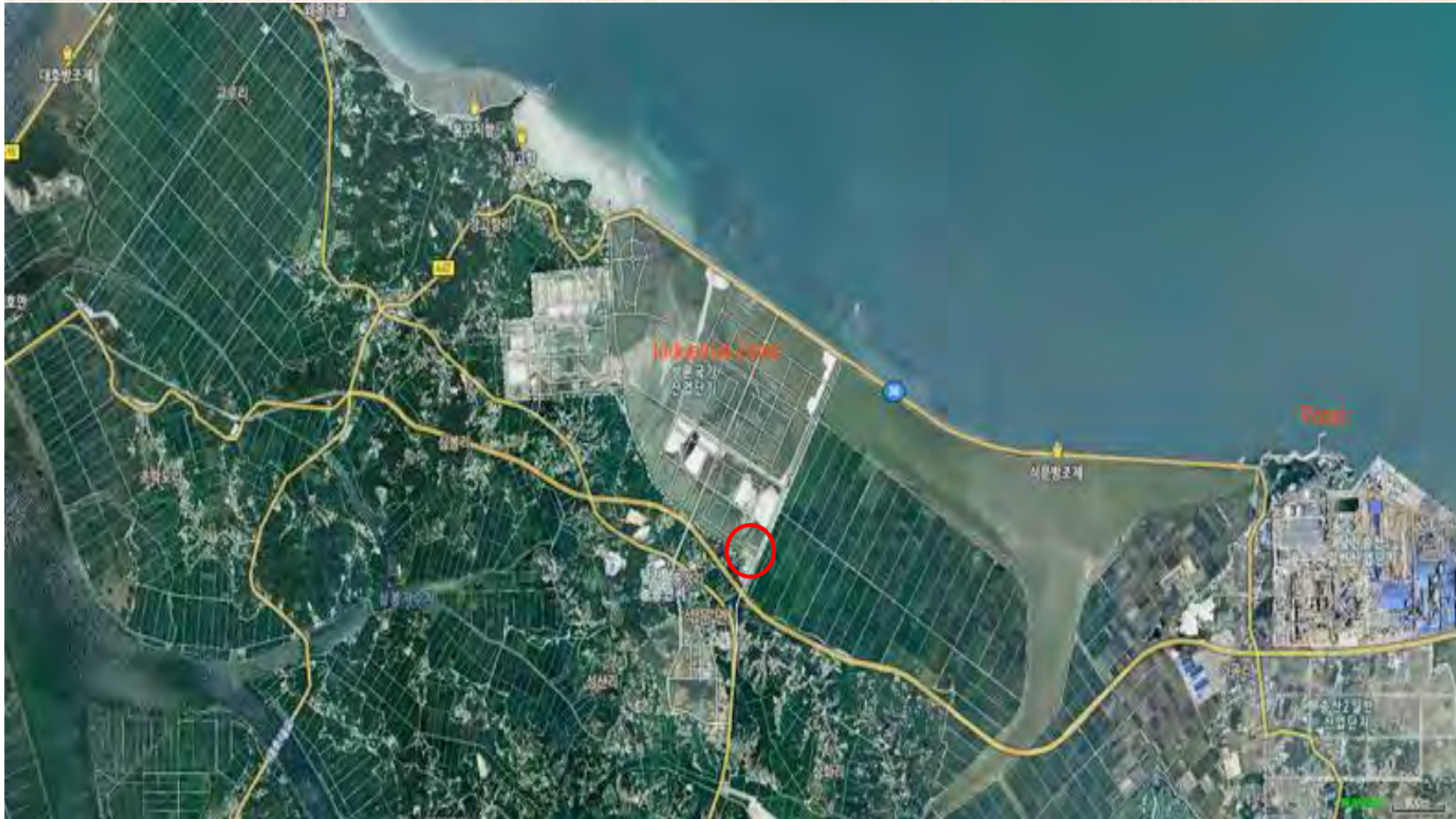




Procon International Group Korea Co.,Ltd

프로콘 인터내셔널 그룹 코리아 주식회사

F2, (Beon Dong) 62-1, Dosan-Ro, Seo Gu, Dae Jeon, 35320 Korea, Tel: +8270-7715-7862. Fax: +8242-524-6945. e-mail: prowide@prowide.com. www.procongroup.org. www.prowide.com





Procon International Group Korea Co.,Ltd

프로콘 인터내셔널 그룹 코리아 주식회사

F2, (Beon Dong) 62-1, Dosan-Ro, Seo Gu, Dae Jeon, 35320 Korea, Tel: +8270-7715-7862. Fax: +8242-524-6945. e-mail: prowide@prowide.com. www.procongroup.org. www.prowide.com





9. TOTAL COST ESTIMATION OF THE PROJECT: US\$25,259,780- Say Twenty Five Million Two Hundred Fifty Nine Thousand and Seven Hundred Eighty United States Dollars. But cut out US\$780.

10. PROJECT TERM: The construction term is only Two (2) years grace period from start of investment and repayment term is 2 years from start of business operation. Repaid completed including fixed 5% rates of interest for the investment amount, total repay amount will be US\$34,464,150.

11. FINANCING PLAN:

- 1) Equity: Land cost: US\$12,375,000.
- 2) Factory building construction cost is US\$10,214,160 and Service facility and equipment with Assembling system cost will require US\$1,637,420. .
- 3) Expenses and supervising manpower cost is 1,303,200.
- 4) Investment Guarantee method to investor: Full of assets and property facilities registration name to Investor, after the completed repaid later turn over to Joint Ventured Company name.

12. PROFITABLE:

The Profitable can calculation based production capacity and produced quantities of Factory.

Will be have 6 different major item assembling line in Factory housing and included important part fabrication machinery,

The main pole of the technology is Free Power Generation technology.

See the Production capacity and quantity from table.

(Table) Production Capacity and Profitable

No	Description	Spec of Material	Product Lines	Production per Shift		Monthly	Yearly	Profit per Unit US\$	Total/Month	Total/Yearly
				1 Shift 8 Hrs	2 Shift 16 Hrs	2 Shift	2 Shift		2 Shift/Income	2 shift/day
1	A Type Bike	Body OEM/SKD	2	400	800	1,600	19,200	100	160,000	1,920,000
2	B Type Bike	Body OEM/SKD	1	300	600	600	7,200	150	90,000	1,080,000
3	Scooter/Motor Bike	Body OEM/SKD	1	150	300	300	3,600	300	90,000	1,080,000
4	Mobile Charger	PC Board OEM	1	800	1600	1,600	19,200	20	32,000	384,000
5	Ventilation Motor	Fan OEM	1	500	1000	1,000	12,000	50	50,000	600,000
6	Generator	3-10 Kw/h	3	300	600	1,800	21,600	600	1,080,000	12,960,000
	Total								1,502,000	18,024,000

The investment US\$25,529,780 is production factory complete set up cost.

And normally we will 2 shift operations for the above 6 Items assembling at the factory.

Therefore gross income is US\$18,024,000 annual.

13. BUSINESS OPERATION

1) Operational manpower yearly cost is US\$2,096,400 of factory employer. Can be see the detail from under table.



Table of the Manpower cost of Factory Operational

No	Description	Employer	Wage/US\$	Month/Year	Manpower Cost
1	A Type Bike	14	1,400	12	235,200
2	B Type Bike	14	1,400	12	235,200
3	Scooter/Motor Bike	14	1,500	12	252,000
4	Mobile Charger	12	1,400	12	201,600
5	Ventilation Motor	10	1,400	12	168,000
6	Generator	16	2,000	12	384,000
7	Staff	6	2,400	12	172,800
8	Chief	4	3,200	12	153,600
9	Manager	3	4,500	12	162,000
10	Director	2	5,500	12	132,000
	Total				2,096,400



2) Factory operation yearly cost of utilities. The Cost total is US\$47,630.⁰⁰

Utility Cost for Operational per yearly

No	Utilities	Unit	Quantity	Month/year	U/Price	Total Cost
1	Gas	Kg	50	12	3.2	1,920
2	Electricity	Kw/h	12,000	12	0.12	17,280
3	Water	Ton	60	12	0.82	590
4	Car Fuel	Litter	200	12	1.6	3,840
5	Communication	L/S	5	12	300	18,000
6	Office Supplies	L/S		12	500	6,000
	Total					47,630

3) Expenses Cost total is US\$901,200.⁰⁰

And General Expenses is 5% from Total Production cost, it is 18,024,000 x 0.05 will be US\$901,200.-

According to Total of operational cost (Manpower Cost + Utility Cost+ General Expenses) is

(2,096,400 + 47,630 + 901,200) US\$3,045,230.⁰⁰.

The expenses included of equipment maintenance fee.

So, Net Profitable is (18,024,000-3,045,230) US\$14,978,770.⁰⁰ per yearly this is minimal estimates, if we expanded to 2,3,4,5 factories can make nom limitable profitable. Reason is our system technology is not required free fuel driven motor system and self-generation Electricity power to re-coverage driving power used 25% power only and remaining 75% power keep in battery bank or can send to any of mechanical driving system operation from self-operation and generated powers.

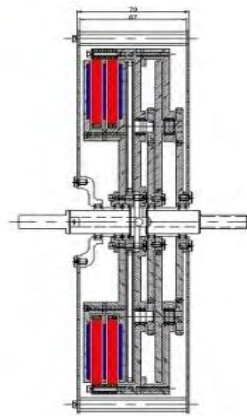
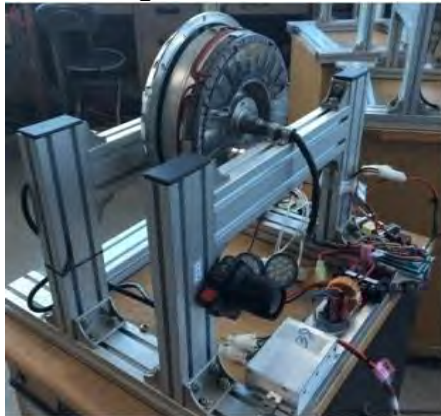
Therefore we can payback of investment 25,53Million from two years after grace period of factory set it up from yearly reasonable net income of US\$14,978,770.⁰⁰.

14. HOW TO SEE THE TECHNOLOGY

1) We can show basic design and driving test video clip on www.youtube.com of John Bright Lee Channel.

- 2) <https://www.youtube.com/watch?v=nfeBQ2x7Fg8>
<https://youtu.be/VisPyhdnbUg>
<https://www.youtube.com/watch?v=P7JGytWa8FI>
https://www.youtube.com/watch?v=ILyvqv_wk74
<https://www.youtube.com/watch?v=wEu3y6HI7cc>
<https://www.youtube.com/watch?v=y4gJf6piHwY&feature=youtu.be>
<https://www.youtube.com/watch?v=IZVT28clGmo>

1) Basic design



You can click photo to driving test view.



15. VALUATION:

We cannot say amount limitation is our new high technology of self-power generation system.

Normally our technologies is 150 Million United States Dollars value age from basically three (3) technologies.

First is not required Fuels Free Driving system technologies,

Second is Double dual self-power generation system Technologies.

Third is Power Quick Saving discharging technologies and Battery re-life Technologie.

This system can be self-power generation from self-driving by starting drive from manually or Starting motor used.

100 percent perfect no need any of fuel for rotor driving (Petrol, Diesel, Gas, Greed Power, Battery Power, water, wind)

And we have patents already from domestic and international.

According to we cannot say to value amount of our new technology from no limitations power generation.

But, International and domestic patents will guarantee of the high technology that cost can be over one million over per patent.

(13 Domestic + 18 International)

16. WHAT WE WANTED:

We will invitation you to our development center in Korea to see. Reason is no see no understand of what is real free power.

This technology sure will be contributed to the peace of humanity.



Procon International Group Korea Co.,Ltd

프로콘 인터내셔널 그룹 코리아 주식회사

F2, (Beon Dong) 62-1, Dosan-Ro, Seo Gu, Dae Jeon, 35320 Korea, Tel: +8270-7715-7862. Fax: +8242-524-6945. e-mail: prowide@prowide.com. www.procongroup.org. www.prowide.com

17. Contact

Investment: Legal advisor:

Korea: +8210 9955 6945. +82 70 7715 7862 (Technology and R/D center)

Cyprus 2nd Foundation of large scal production: +357 9694 2915

This photo is United States Institution of Power Generation team visit to our R & D center

