

## **EXECUTIVE SUMMARY FOR FREE ENERGY PROJECT**

1. PROJECT NAME: PROCON ENERGY
  
2. PROJECT PARTNERS:
  - 1) Procon International Ltd
  - 2) Investment partner
  
3. LOCATION: The project address is Sambong-gil, Seongmun-myeon, Dangjin-si, Chungcheongnam-do, 31706, Republic of Korea. This place can be access to expressway only 450m distance and Shipping port Pyong-Taek Harbo is less of 1Km distance. That expressway can connectivity to full of express high way to Full of Region Korea.
  
4. PROJECT LAND WIDES: 33,000m<sup>2</sup> / (10,000PY)
  
5. PROJECTED DESCRIPTIONS: The project is production factory and Technology Center Construction. And parts production equipment and assembling system set up and parking with Storage buildup.
  
6. PROJECT CONCEPTS
  - 1) Number of Schedule
    - a) Proposal
    - b) Project survey for trusty.
    - c) Agreement
    - d) Land Buy.
    - e) Fence wall construction.
    - f) Project license application.
    - g) Final design for building and system.
    - h) Temporary facilities set up and material warehouse build.
    - i) Electricity, Water source connection.
    - j) Factory and Technology Center construction.
    - k) Equipment purchase.
    - l) Equipment election and production system set up.
    - m) Electrical instrument set up.
    - n) Furniture and office set up
    - o) Security system set up.
    - p) Registration approval from Ministry for business.
    - q) Business Operation

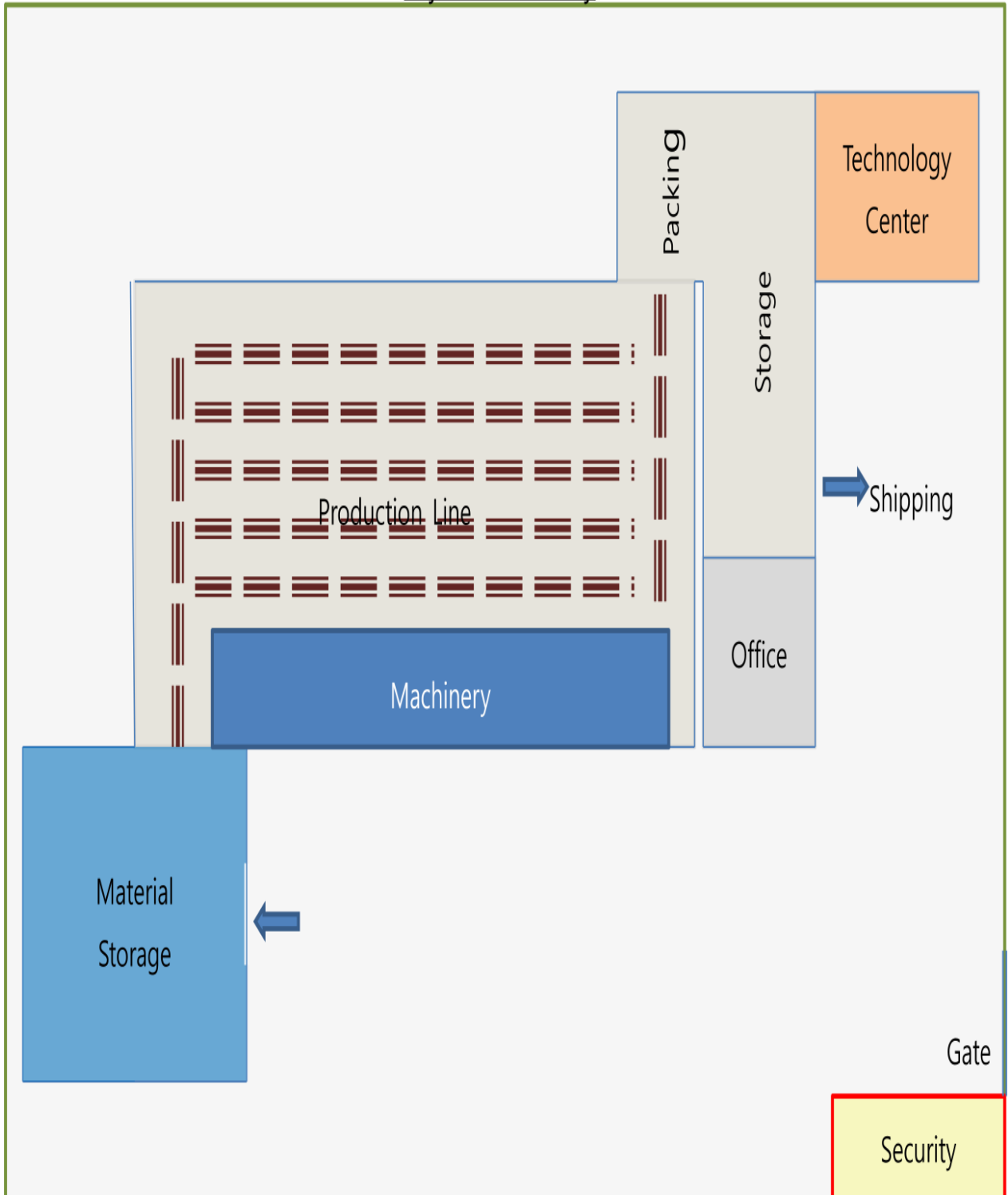
## 2) System and Facilities:

The system is law material input to produce parts and assemble then quality test and restore to standby for shipping.

The Facilities list is:

No	Descriptions	Specification	Unit	Quantity
<b>1</b>	Property			
	Project Land	Industrial zone	M <sup>2</sup>	16,500
<b>2</b>	Asset			
2-1	Law material Storage	Concrete block	M <sup>2</sup>	990
2-2	Production and Assembling	Concrete block	M <sup>2</sup>	3,300
2-3	Parking and Storage	Concrete block	M <sup>2</sup>	990
2-4	Technology Center	Concrete block	M <sup>2</sup>	330
2-5	Office	Concrete block	M <sup>2</sup>	198
	Sub-Total		M <sup>2</sup>	5,808
<b>3</b>	Sub Facilities			
3-1	Electricity Gear		Unit	1
3-2	Water system		Unit	1
3-3	Gas	Tank type	Unit	1
3-4	Air System	Include Compressor	Unit	1
3-5	Security System		Unit	1
3-6	Fire Protection system		Unit	1
<b>4</b>	Equipments			
4-1	CNC Lathe (Full Auto)	Computer system	Unit	2
4-2	Lathe	2m bed length	Unit	2
4-3	CNC Milling (Full Auto)	Computer system	Unit	4
4-4	Grinding machine	2m Length	Unit	3
4-5	Planer	4m Bed Length	Unit	2
4-6	Radial Drill machine	2" bore bite	Unit	2
4-7	Table Drill	1"	Unit	2
4-8	CNC Turning Machine		Unit	2
4-9	Cleaning System		Unit	2
4-10	Vehicle (Cargo Truck)	2.5 ton	Unit	3
4-11	Vehicle (Sedan for passenger)	For Director	Unit	4
<b>5</b>	Assembling System			
5-1	Roller Conveyor 3 line	1m wide	M	150
5-2	Air Impact system		system	1
5-3	Lording Panels for Conveyor	Plastic (1m x 1.5m)	EA	200
5-4	Tool Kit (Manual and Auto)	Box, Spanner, air Wrench	Set	30
5-5	Packing Machine		Unit	2
5-6	Fork Lift	For Loading Unloading	Unit	1

# Layout of Factory





### Factory Building Plan

No	Description	Unit	Length	wide	Line	Total	Total PY
1	Law material Storage	M <sup>2</sup>	33	15	2	990	300
2	Production and Assembling	M <sup>2</sup>	44	15	5	3300	1000
3	Parking and Storage	M <sup>2</sup>	33	15	2	990	300
4	Technology Center	M <sup>2</sup>	22	15	1	330	100
5	Office	M <sup>2</sup>	13.2	15	1	198	60
	Total	M <sup>2</sup>				5808	1760

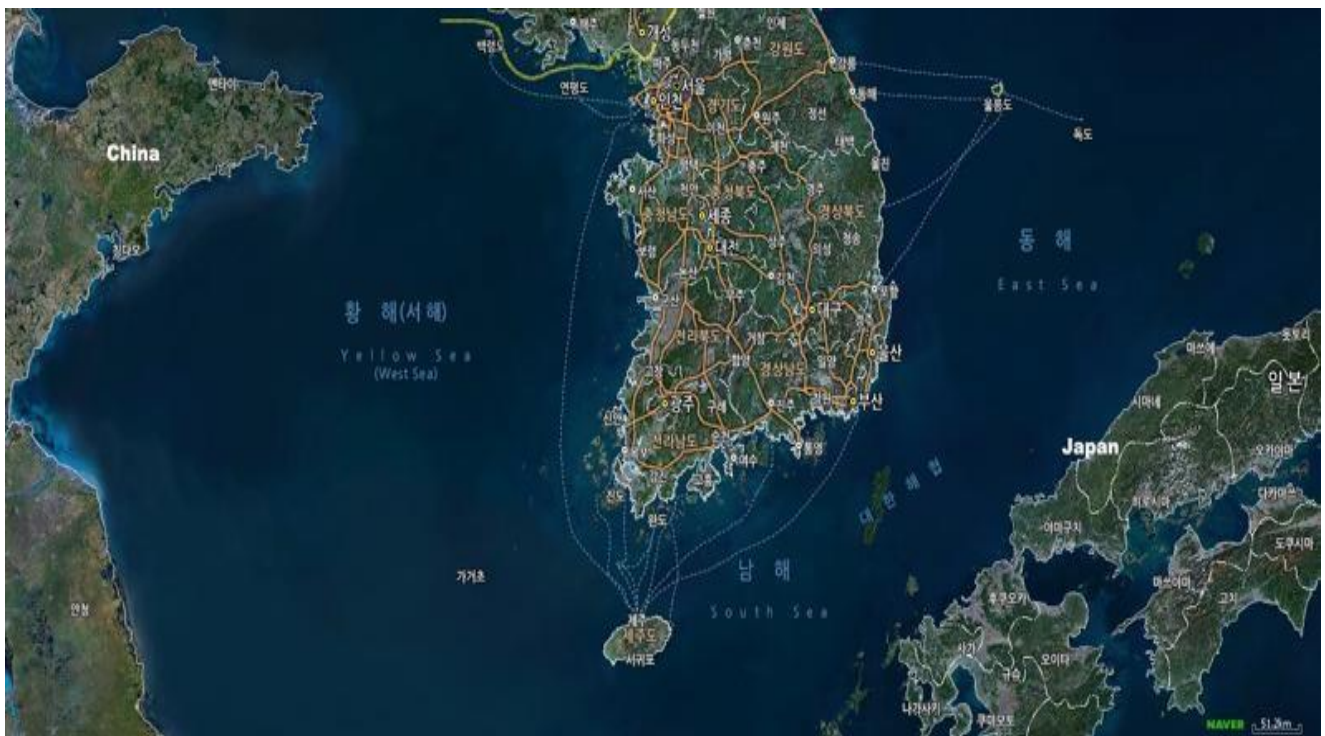
## Cost Estimation for Energy project

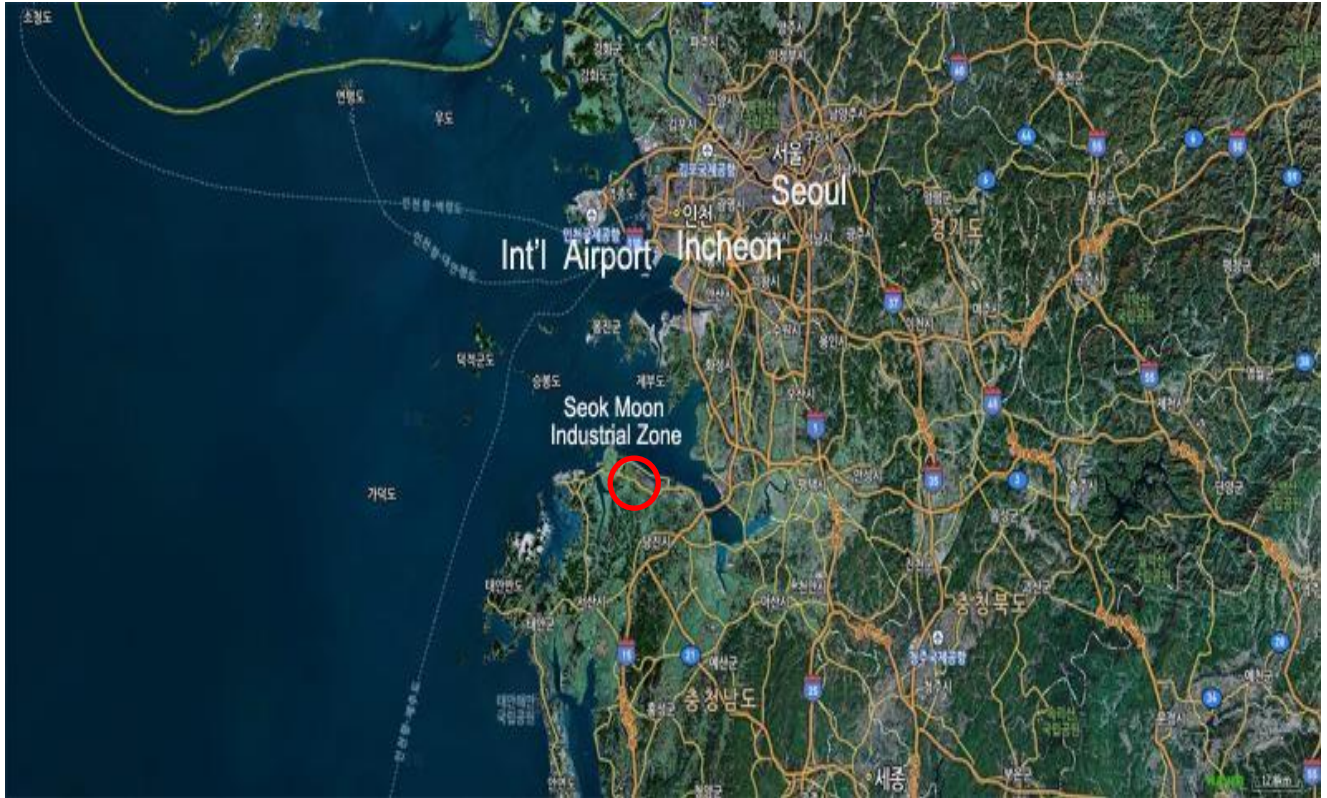
US\$

No	Descriptions	Specification	Unit	Q'ty	Price	Cost
<b>1</b>	Property					
	Project Land	Industrial zone	M <sup>2</sup>	16,500	750	12,375,000
<b>2</b>	Asset					
2-1	Law material Storage	Concrete block	M <sup>2</sup>	990	1,560	1,544,400
2-2	Production and Assembling	Concrete block	M <sup>2</sup>	3,300	1,820	6,006,000
2-3	Parking and Storage	Concrete block	M <sup>2</sup>	990	1,560	1,544,400
2-4	Technology Center	Concrete block	M <sup>2</sup>	330	2,300	759,000
2-5	Office	Concrete block	M <sup>2</sup>	198	1,820	360,360
	Sub-Total		M <sup>2</sup>	5,808		10,214,160
<b>3</b>	Sub Facilities					
3-1	Electricity Gear		Unit	1	22,300	22,300
3-2	Water system		Unit	1	7,500	7,500
3-3	Gas	Tank type	Unit	1	5,200	5,200
3-4	Air System	Include Compressor	Unit	1	38,000	38,000
3-5	Security System		Unit	1	25,000	25,000
3-6	Fire Protection system		Unit	1	45,000	45,000
	Sub-Total					143,000
<b>4</b>	Equipment					
4-1	CNC Lathe (Full Auto)	Computer system	Unit	2	58,000	116,000
4-2	Lathe	2m bed length	Unit	2	18,000	36,000
4-3	CNC Milling (Full Auto)	Computer system	Unit	4	64,500	258,000
4-4	Grinding machine	2m Length	Unit	3	32,000	96,000
4-5	Planer	4m Bed Length	Unit	2	47,000	94,000
4-6	Radial Drill machine	2" bore bite	Unit	2	5,300	10,600
4-7	Table Drill	1"	Unit	2	960	1,920
4-8	CNC Turning Machine		Unit	2	58,000	116,000
4-9	Cleaning System		Unit	2	7,600	15,200

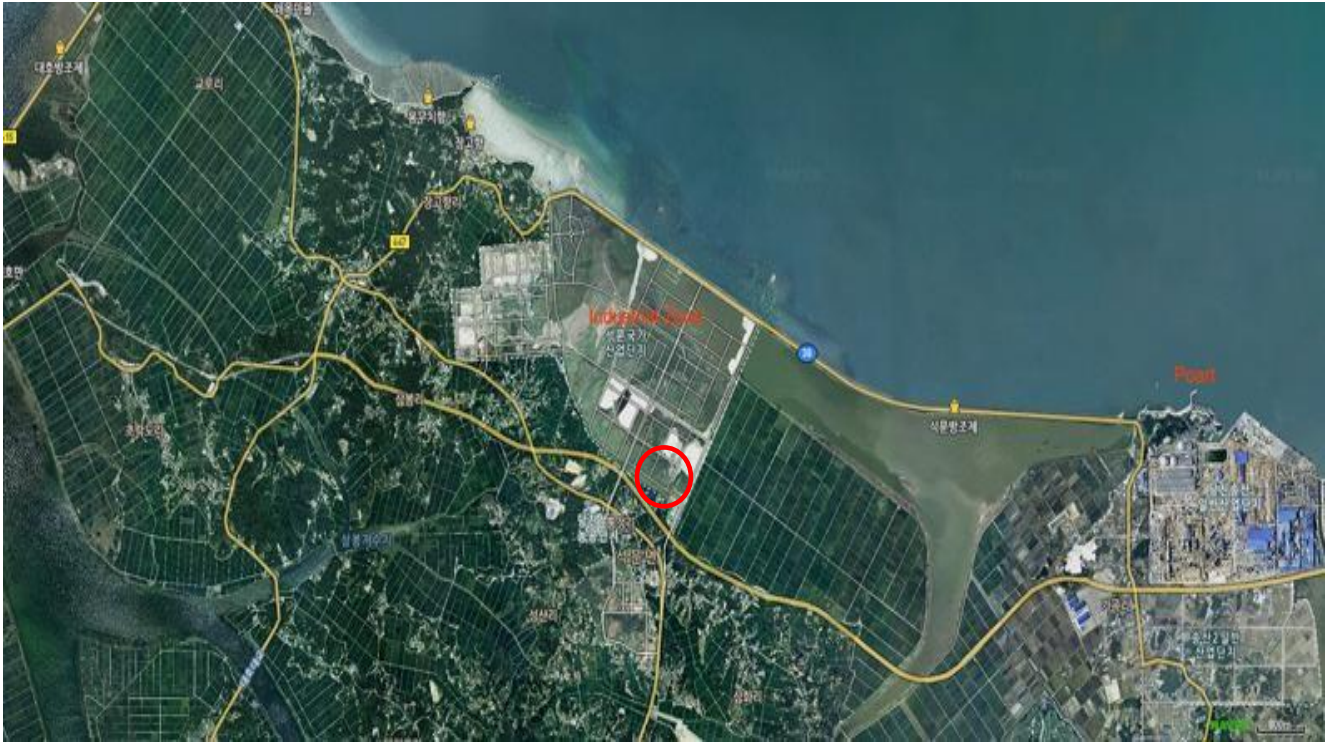


## PROJECT LOCATION









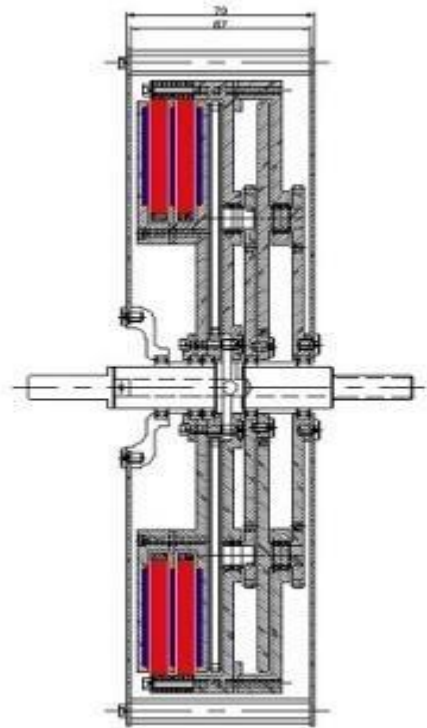
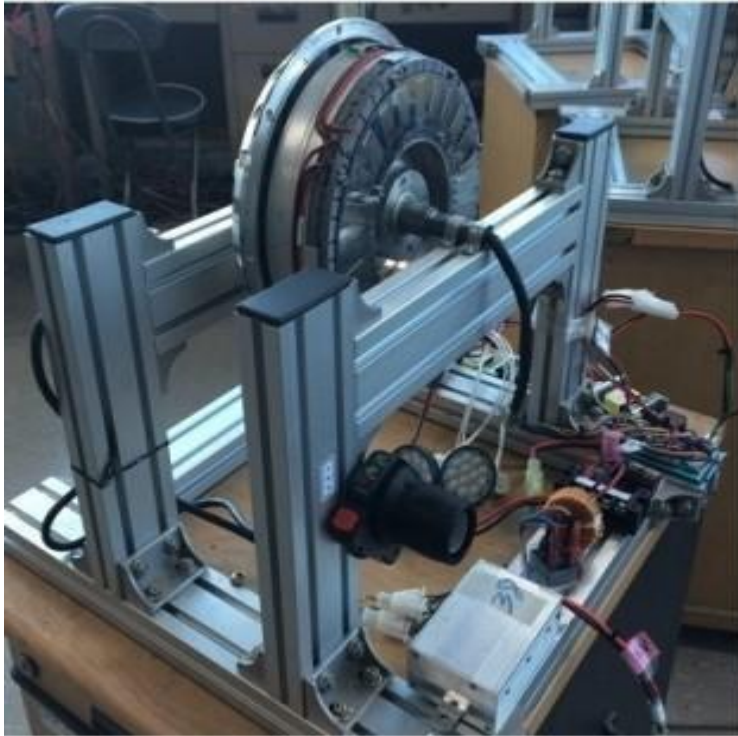
7. PROJECT TOTAL COST ESTIMATION: US\$25,259,780- Say Twenty Five Million Two Hundred Fifty Nine Thousand and Seven Hundred Eighty United States Dollars. But cut out US\$780.

8. PROJECT TERM: The construction term is only Two (2) years grace period from start of investment and repayment term is 5 years to completion repaid including fixed 5% rates interest, total repay amount will be US\$34,464,150.
9. FINANCING PLAN:
  - 1) Equity: Land cost: US\$12,375,000.
  - 2) Factory building construction cost is US\$10,214,160 and Service facility and equipment with Assembling system cost will require US\$1,637,420. .
  - 3) Expenses and Supervising manpower cost is 1,303,200.
  - 3) Investment Guarantee method to investor: Full of assets and property facilities registration name to Investor, after the completed repaid later turn over to Joint Ventured Company name.
10. PROFITABLE:

Yearly production and marketing volume estimation:

  - 1) Local country market will be require 200,000 Units minimum and worldwide international user will buy 1,000,000 Unit minimum. If Total quantity is 1,200,000 set can be sort out per first yearly.
  - 2) The profitable estimate US\$500 per unit, total profitable will be income US\$600,000,000. This is Six Hundred Million Dollars.
  - 3) Why we can estimation this very large amount profitable, Who buyer see our new technologies free power generation item they will should be surprise. And they will open pocket immediate.
11. HOW TO SEE THE TECHNOLOGY
  - 1) We can show basic design and driving test video clip on [www.youtube.com](http://www.youtube.com) of John Bright Lee Channel.
  - 2) <https://www.youtube.com/watch?v=nfeBQ2x7Fg8>  
<https://www.youtube.com/watch?v=fdBqUMoTHro>  
<https://www.youtube.com/watch?v=5z-7UajiVcA>  
<https://www.youtube.com/watch?v=P7JGytWa8FI>  
[https://www.youtube.com/watch?v=ILyvgv\\_wk74](https://www.youtube.com/watch?v=ILyvgv_wk74)  
<https://www.youtube.com/watch?v=wEu3y6HI7cc>  
<https://www.youtube.com/watch?v=y4qJf6piHwY&feature=youtu.be>  
<https://www.youtube.com/watch?v=IZVT28clGmo>

#### 4) Basic design and development view



#### 12. VALUATION:

We cannot say amount of Value for our new high technology of self-generation power rotor. It will can be recover of full electricity power. This rotor can be power generation self from driving self by starting drive from manually or Starting motor used.

100 percent no need any of fuel for rotor driving (Petrol, Diesel, Gas, Greed Power, Battery Power, water, wind)

And we have patents already from domestic and international.

According to we no value of our new technology from no limitations power generation.

#### 14. WHAT WE WANTED:

We will invitation you to our development center in Korea to see. Reason is no see no understand of what is real free power.

This technology sure will be contributed to the peace of humanity.

#### 15. Contact:

- 1) Korea: +82 10 9955 6945.
- 2) Europ: +357 9621 3916